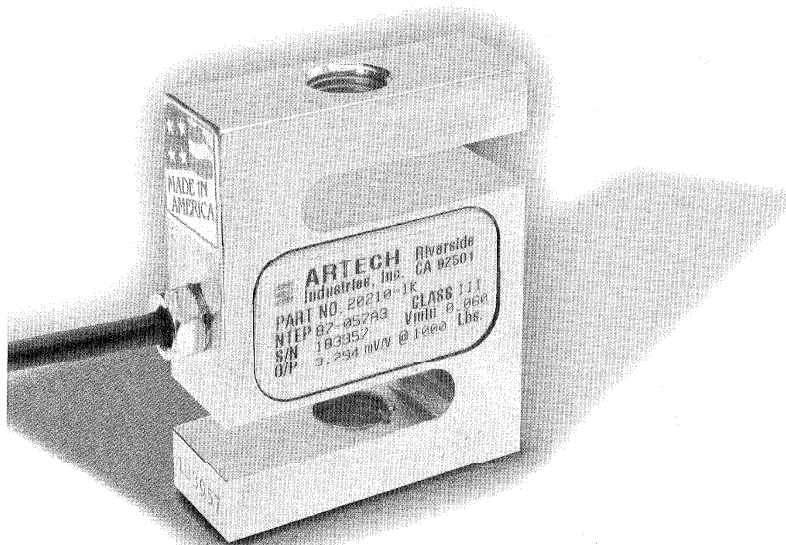


"a preferred name in load cell technology"

**Model 20210**



**NTEP C.O.C. #87-057A3**

**Type "S" Load Cell**

**FEATURES:**

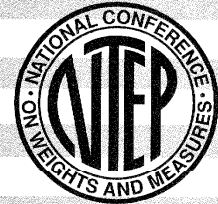
- 25 to 40,000 pounds capacities
- Complete environmental protection
- Stainless Steel versions available
- NTEP Certified versions available for Class III 5,000 divisions and Class III L 10,000 divisions
- Factory Mutual (F.M.) Approved †

**DESCRIPTION:**

Economical load cell for use in tank weighing, scale conversions and in-line force measurement applications. The versatile and compact unit works in tension or compression and is lightweight. Also rugged and sealed for use in washdown areas. Standardized output available on request ( $3.0 \pm .1\%$ ).

**PERFORMANCE SPECIFICATIONS**

<b>Standard Capacities (lbs.):</b>	25, 50, 75, 100, 150, 200, 250, 300, 500, 750, 1K, 1.5K, 2K, 2.5K, 3K, 5K, 10K, 15K, 20K, 30K, 40K
<b>Excitation Voltage:</b>	10VDC - Maximum 15VDC
<b>Rated Output:</b>	3.0 mv/v Minimum
<b>Non-Linearity:</b>	< 0.03% FSO (Full Scale Output)
<b>Hysteresis:</b>	< 0.02% FSO
<b>Non-Repeatability:</b>	< 0.01% FSO
<b>Zero Balance:</b>	$\pm 1.0\%$ FSO
<b>Bridge Resistance:</b>	350 ohms nominal
<b>Safe Overload:</b>	150% of Rated Capacity
<b>Temperature:</b>	
<b>Compensated Range:</b>	0 - 150 deg. F
<b>Effect on Output:</b>	< 0.0008% FSO/deg. F
<b>Effect on Zero:</b>	< 0.0011% FSO/deg. F
<b>Finish:</b>	Electroless Nickel/Chrome Plated



**APPROVED**

# Model 20210

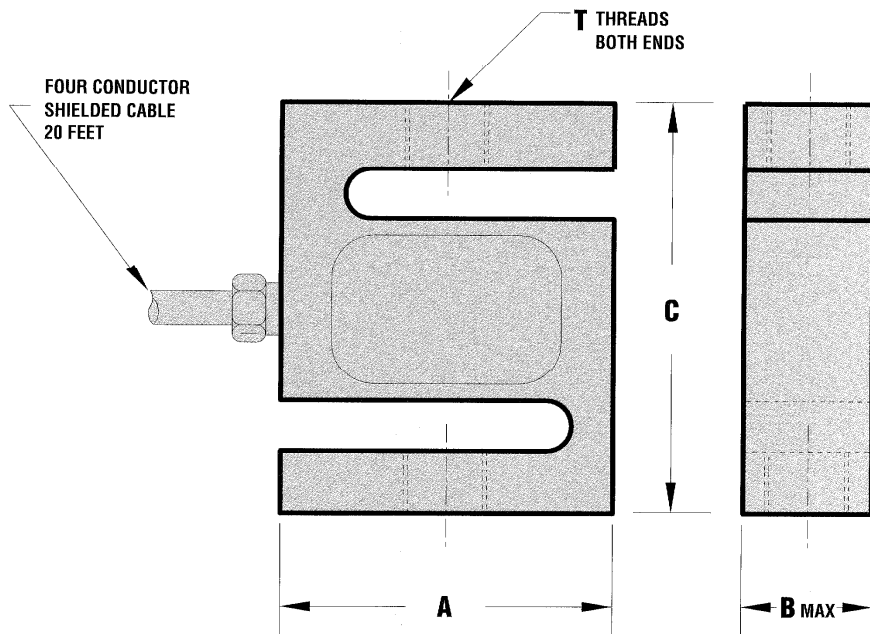


CAPACITY LBS.	A	B MAX.	C	T THREADS
25-300	2.00	.75	2.50	1/4 - 28 UNF - 2B
500 - 2.5K	2.00	1.00	2.50	1/2 - 20 UNF - 2B
3K	3.00	1.25	4.00	1/2 - 20 UNF - 2B
5K, 10K	3.00	1.25	4.00	3/4 - 16 UNF - 2B
15K	3.50	1.50	5.50	1 - 14 UNF - 2B
20K	4.50	2.00	7.00	1 1/4 - 12 UNF - 2B
30K, 40K	5.75	2.75	10.00	1 1/2 - 12 UNF - 2B

**ELECTRICAL TERMINATION**

INPUT	OUTPUT	SHIELD
RED (+)	GREEN (+)	
BLACK (-)	WHITE (-)	

**TENSION POSITIVE**

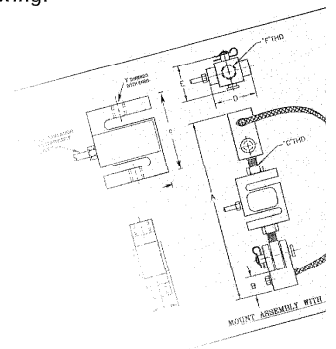


† Factory Mutual Systems approved as intrinsically safe when installed per F.M. approved installation drawing. Contact ARTECH sales department for details.

Represented by:



1966 Keats Drive, Riverside, CA 92501



## ORDER INFORMATION

- ◆ **ARTECH** is dedicated to maintaining adequate inventories of its Load Cells to provide the best service in the industry.
- ◆ Order by the model number and indicate the capacity required.
- ◆ Custom services such as matched load cell outputs, special threading, and custom calibrations are available on an optional basis at an extra cost.

**Let us know what you need... we listen!**  
**QUALITY • PERFORMANCE • SERVICE**  
**909-276-3331 • 800-654-8181 • Fax: 909-276-4556**  
 Email: [artechind@msn.com](mailto:artechind@msn.com)    [www.artech-loadcell.com](http://www.artech-loadcell.com)