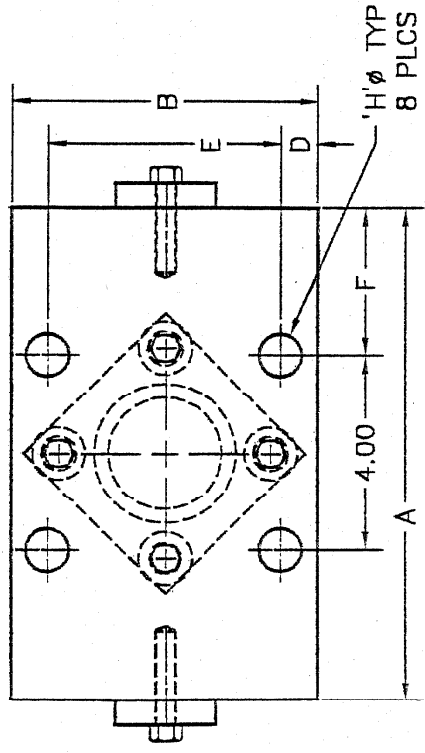
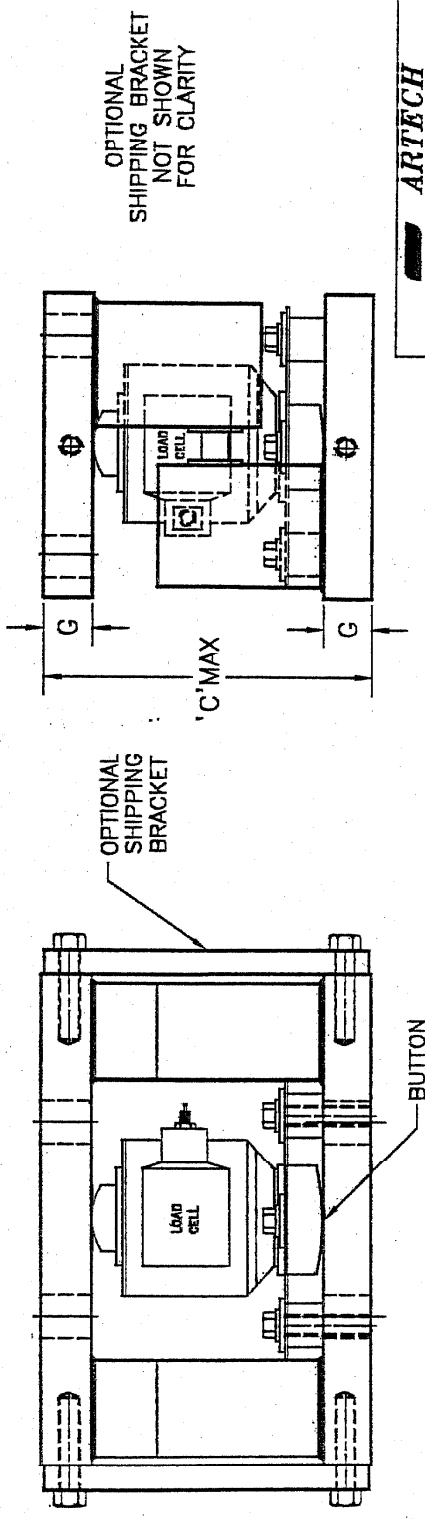


CAPACITY	MODEL No	LOAD CELL USED	REVISION							
			A	B	C _{MAX}	D	E	F	G	H DIA
10K-50K	WMVI-A	90210/90310	10.00	6.00	6.15	0.75	4.50	3.00	1.00	0.69
100K	WMVI-B	90210/90310	11.00	8.00	9.00	1.00	6.00	3.50	1.50	0.82
200K	WMVI-C	90210/90310	13.00	10.00	12.20	1.00	8.00	4.50	2.00	1.12
300K	WMVI-D	90210/90310	14.00	10.00	12.20	1.00	8.00	5.00	2.00	1.12



WM-VI MOUNT ASSY
FOR : 90210/90310-10K TO 300K

RELEASE
 DATE 10-17-97 SIGN MK



1 : PLATES CONTACTING THE LOAD CELL ARE HARDENED

NOTES

THESE DRAWINGS AND SPECIFICATIONS CONTAIN INFORMATION CONSIDERED TO BE CONFIDENTIAL AND PROPRIETARY BY ARTECH INDUSTRIES, INC. AND SHALL NOT BE REPRODUCED, COPIED OR USED FOR MANUFACTURE OR SALE OF APPARATUS OR DEVICES WITHOUT THE WRITTEN APPROVAL OF ARTECH INDUSTRIES, INC.

UNLESS OTHERWISE SPECIFIED, DIMENSIONS ARE IN INCHES.
 1-015
 2-015
 3-015
 4-015
 5-015
 6-015
 7-015
 8-015
 9-015
 10-015
 11-015
 12-015
 13-015
 14-015
 15-015
 16-015
 17-015
 18-015
 19-015
 20-015
 21-015
 22-015
 23-015
 24-015
 25-015
 26-015
 27-015
 28-015
 29-015
 30-015
 31-015
 32-015
 33-015
 34-015
 35-015
 36-015
 37-015
 38-015
 39-015
 40-015
 41-015
 42-015
 43-015
 44-015
 45-015
 46-015
 47-015
 48-015
 49-015
 50-015
 51-015
 52-015
 53-015
 54-015
 55-015
 56-015
 57-015
 58-015
 59-015
 60-015
 61-015
 62-015
 63-015
 64-015
 65-015
 66-015
 67-015
 68-015
 69-015
 70-015
 71-015
 72-015
 73-015
 74-015
 75-015
 76-015
 77-015
 78-015
 79-015
 80-015
 81-015
 82-015
 83-015
 84-015
 85-015
 86-015
 87-015
 88-015
 89-015
 90-015
 91-015
 92-015
 93-015
 94-015
 95-015
 96-015
 97-015
 98-015
 99-015
 100-015

ARTECH
 INDUSTRIES INC.
 RIVERSIDE, CA - USA

DATE 10-05-97
 DRAWN BY J. BLAUSMAN
 SCALE 1 NONE
 APPROVED BY J. BLAUSMAN
 MODEL: WMVI-XX
 71055